



Agni Instruments Engineers India Private Limited

# Agni Standard REMOTE SIGNAL

V-1

## TECHNICAL DATA SHEET

## RESPONSE INDICATOR FALSE CEILING -502



### RESPONSE INDICATOR FOR ANY TYPE DETECTOR

Agni Instruments Engineers India Private Limited manufactures a dual-LED response indicator compatible with any conventional or addressable detector. featuring a durable ABS body suitable for both wall & ceiling mounting. The dual-LED design ensures enhanced visibility & reliability of alarm indication. directly connected with detector base. Its primary function is to provide a clear and immediate visual confirmation of detector activation. When the Response Indicator associated detector enters an alarm condition the response indicator illuminates with a bright red LED glow, enabling rapid identification of the reference detection devices source of the alarm.

### Product Overview

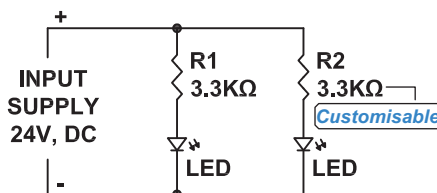
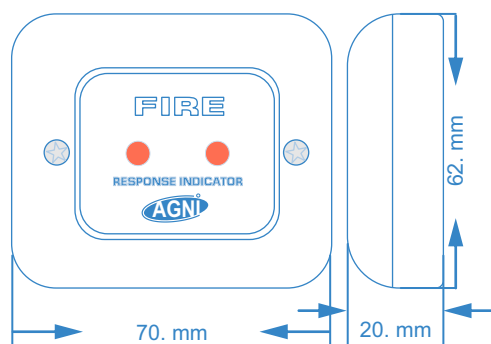
- A response indicator especially beneficial in installation as visual device used to duplicate a fire detector's alarm light in an accessible, visible location such as high-depth or false ceilings, air-conditioning ducts, outside OF the rooms, store and other restricted or visually obstructed areas. By providing a remote visual indication, they significantly reduce response time during alarm events and facilitate efficient maintenance, inspection, and emergency intervention.
- Standards Compliance Conforms with ( UL / EN 54-5-7 / NFPA-72 or IS 2189 .NBC)

### Response Indicator Concealed

- Outer plastic body made out of Fr ABS
- Rugged / Industrial Design
- Flush Mount
- High Bright LED ( wide Viewing Angle ) advanced immunity to airborne contaminants
- Life span Upto 100000 Hrs.
- Ultra very low power two LEDs alarm Ind.
- Low profile Desing

### TECHNICAL SPECIFICATIONS

Operating voltage	15Vdc – 40Vdc *
Average current	2.5mA @ 24Vdc
Cable Size	1.5-SQ-MM
Led Color	In Case of Fire Red
Operating Temperature (no icing)	-10°C / +70°C
Max tolerated humidity (non condensing)	95% RH
Dimensions	H-62 W-71 D-20 mm
Enclosure	ABS - Plastic Acrylonitrile Butadiene Styrene
Body Color	White
Weight (standard base included)	32 g
IP rating	40 (42 overall waterproof protection)



CE  
EN 54-5-7  
IS 2189  
ERTL / NABL