



TECHNICAL DATA SHEET

Agni Instruments Engineers India Private Limited Manufactures A Dual-led Response Indicator Compatible With Any Conventional Or Addressable Detector. Featuring A Durable sheet-metal body Suitable For Wall Mounting Only The Dual-led Design Ensures Enhanced Visibility & Reliability Of Alarm Indication. Directly Connected With Detector Base. Its Primary Function Is To Provide A Clear And Immediate Visual Confirmation Of Detector Activation. When The Response Indicator Associated Detector Enters An Alarm Condition The Response Indicator Illuminates With A Bright Red Led Glow, Enabling Rapid Identification Of The Reference Detection Devices Source Of The Alarm.



V-2

Product Application & Overview

- A response indicator especially beneficial in installation as visual device used to duplicate a fire detector's alarm indicator led light in an accessible, visible location such as high-depth or false ceilings, air-conditioning ducts, outside OF the rooms, lab, store , cabin and other restricted or visually obstructed areas. By providing a remote visual indication, they significantly reduce response time during alarm events and facilitate efficient maintenance, inspection, and emergency intervention.
- Standards Compliance Conforms with (UL / EN 54-5-7 / NFPA-72 or IS 2189 .NBC , NABL LAB)
- Standards Conforms With Government Of India CPWD DSR Specification .

RESPONSE INDICATOR CONCEALED-503

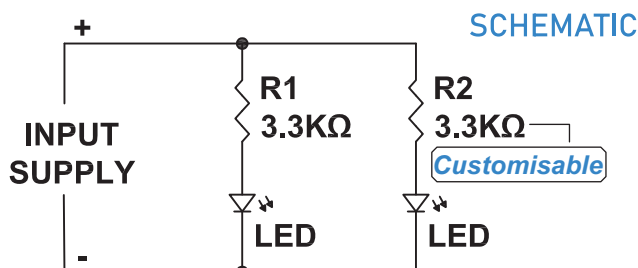
TECHNICAL SPECIFICATIONS

Operating voltage	15Vdc – 40Vdc *
Average current	7.27 mA + @ 24Vdc
Cable Size	1.5-SQ-MM
Led Color	In Case of Fire Red
Operating Temperature (no icing)	-10°C / +90°C
Max tolerated humidity	95% RH (non condensing)
Dimensions	H-80 W-58 D-48 mm
Enclosure	Solid profile sheet metal forming
Body Color	Ral-9010 White Coating
Weight	250 g
IP rating	42 overall protection

PRODUCT FEATURES

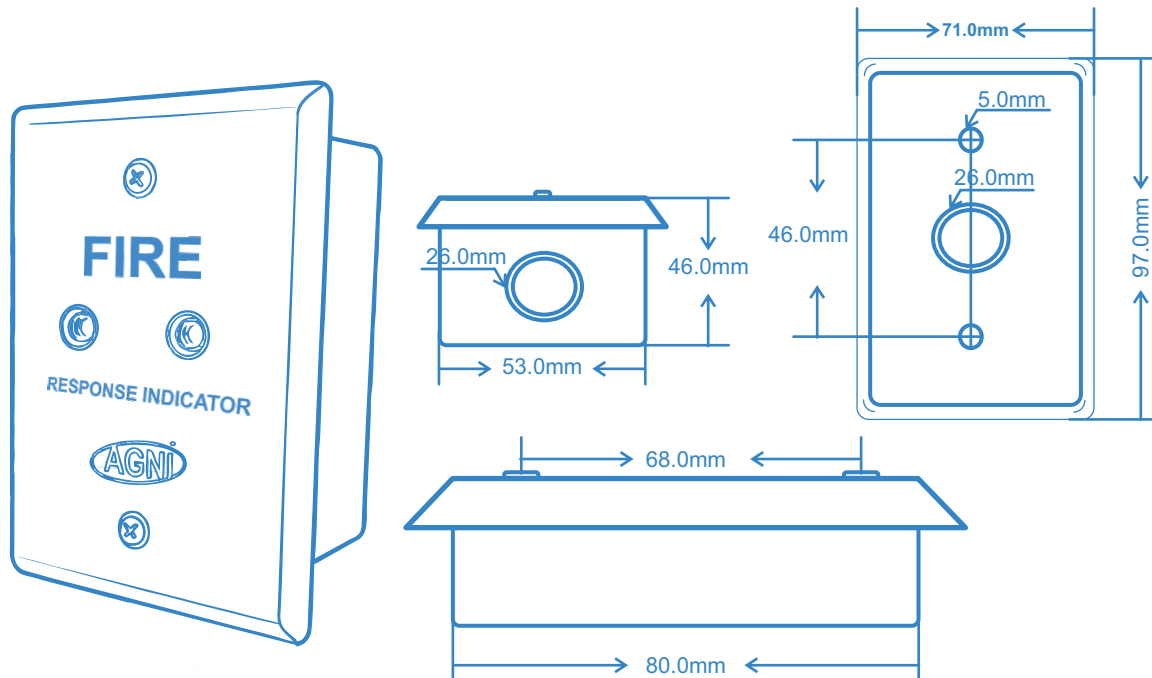
- Outer Body Made Out Of sheet-metal
- Rugged / Industrial Design
- Wall Mount Only
- High Bright Led (Wide Viewing Angle)
- Advanced Immunity To Airborne Contaminants
- Life Span Upto 100000 Hrs.
- Ultra Very Low Power Two Leds Alarm Ind.
- Low Profile Desing

CERTIFICATIONS



CE
EN 54-5-7
IS 2189
ERTL / NABL

MECHANICAL DATA



RESPONSE INDICATOR - 503 ARCHITECTURE SHEET METAL

Application

Agni Instruments Engineers India Pvt. Ltd. makes a dual-LED response indicator used in fire alarm systems. It works with both conventional and addressable detectors. This device gives visual indication when alarm comes. It is connected on detector base. Dual LEDs improve visibility so operators can quickly understand alarm status during fire conditions. Mainly used in commercial buildings, industries, data centers, hospitals, hotels, warehouses and other important safety areas.

Enclosure

The response indicator is assembled inside a strong sheet-metal body, which protects the electronic circuit from environmental and mechanical damage. The enclosure is made from CRCA sheet metal using forming process for correct bend, shape and mounting. This gives good durability, correct size and uniform quality. The device supports surface or flush mounting as per site requirement and gives reliable status indication for faster response and easy diagnostics.

DEVICE COMPATIBLE OTHER BRAND

- HONEYWELL / NOTIFIER / FARENHYT
- EDWARD / KIDDE / GST
- SIMPLEX / JOHNSON CONTROL / FIRE CLASS
- APOLLO FIRE ALARM / AGNI VEIGA / EATON FIRE ALARM

CERTIFICATIONS



CE
EN 54-5-7
IS 2189
ERTL / NABL