

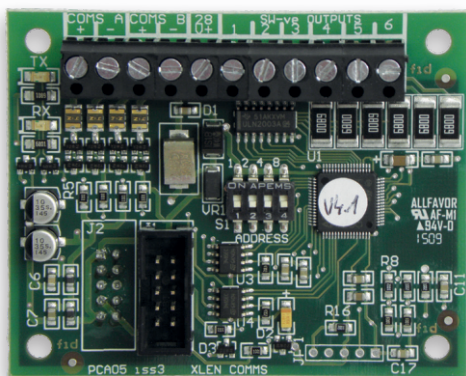


Agni Instruments Engineers India Private Limited

Agni Veiga Series Intelligent Addressable

V-1

TECHNICAL DATA SHEET



NETWORK COMMUNICATIONS CARD

FAP-3002 NETWORK COMMUNICATIONS CARD

Agni Veiga Rs485 is a robust, multi - node communication standard for Intelligent Addressable use, enabling long-distance (up to 1200Mtr) data transfer between 16 Node, devices over two wires (A/B) using differential signals for excellent noise immunity full - duplex RS485 bus topology with twisted-pair cables, making it reliable for noisy environments.

Differential Signaling: Uses two wires (A & B) with inverted signals Noise affects both equally, allowing receivers to focus on the Voltage difference, rejecting interference.

Product Overview & Function

Agni Veiga Rs485 Network Topology Best suited for bus Ring or daisy-chain layouts avoiding star topologies to prevent signal reflection.

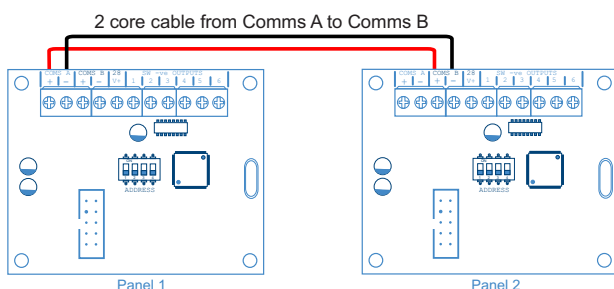
Multi-NodeNetwork: Supports multiple transmitters and receivers on a single bus (up to 16 node devices, extendable with transceivers), unlike RS485's point-to-point.

Distance & Speed: Up to 1200 meters at decent speeds (up to 10 Mbps, lower speeds for longer distances).

Full access Mode used as high speed data communication (devices take turns transmitting/receiving on the same pair) but can be full-duplex.

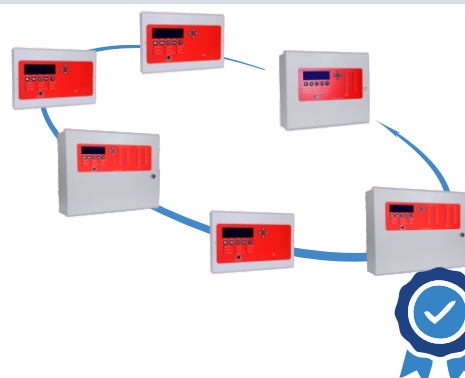
Response Indicator Concealed

- Full Access Remote Monitoring
- Reliable: Handles harsh industrial environments.
- Cost-Effective: Reduces wiring compared to many alternatives.
- Scalable: Easily add many devices to one network.
- Simple plug in communication card
- Allows networking of up to 8 control panels & 8 repeater
- Fully monitored fault
- tolerant network or legacy
- radial circuit wiring
- Includes 6 x programmable outputs



TECHNICAL SPECIFICATIONS

Supply Through	Main Panel Mother Board
Standby Current	24/28 Vdc @ 5.2mA
Cable Size	1.5-SQ-MM
Comms A - B	28v, fused @ 500mA
Operating Temperature	-10°C / +70°C
Output	programmable switch -ve, max load = 40mA
Weight (standard base included)	45 g
IP rating	40 (42 overall waterproof protection)



CE
EN 54-5-7
IS 2189
ERTL / NABL

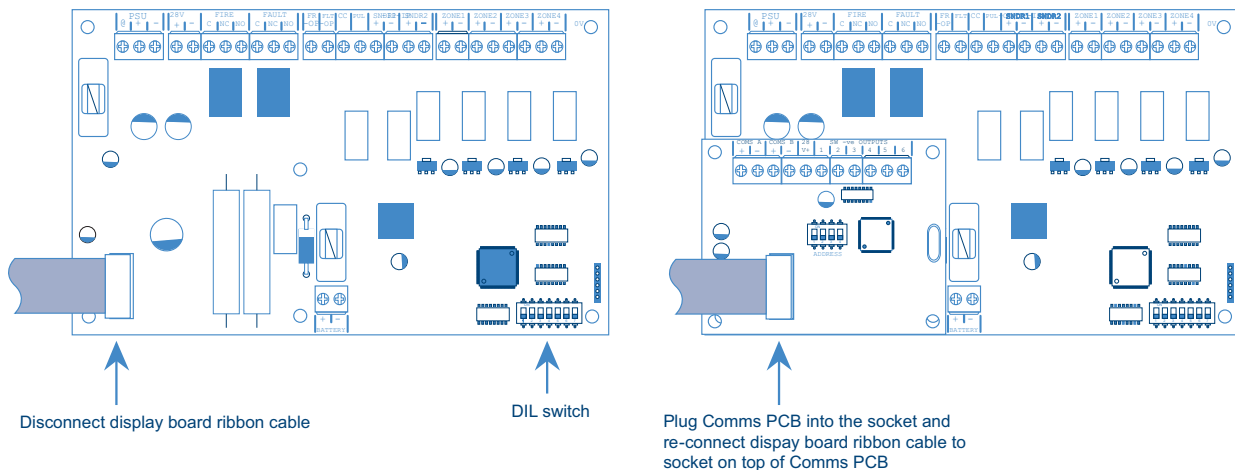
Page-1

Installation Instructions

The Comms PCB fits into the control panel on top of the main circuit board where the ribbon cable from the display board comms is normally plugged.

To fit the Comms PCB, power down the panel, un-plug the display board ribbon cable from the main circuit board and plug the Comms PCB into the socket instead.

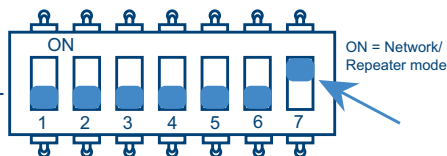
A socket is provided on the top of the Comms PCB to re-connect the display board ribbon cable.



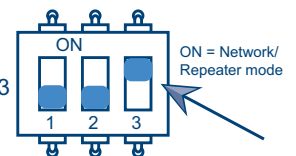
Each panel to be included in the network is defined by setting a switch on the main PCB.

OFF = Stand Alone mode, ON = Network/Repeater mode.

In the case of the Esento Excel this is switch 7 on the 7 way DIL switch

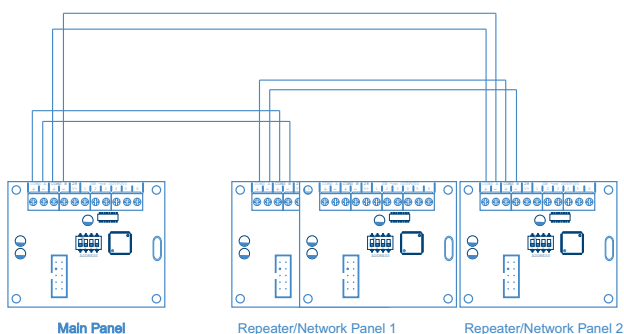


In the case of the Esento Evoque this is switch 3 on the 3 way DIL switch

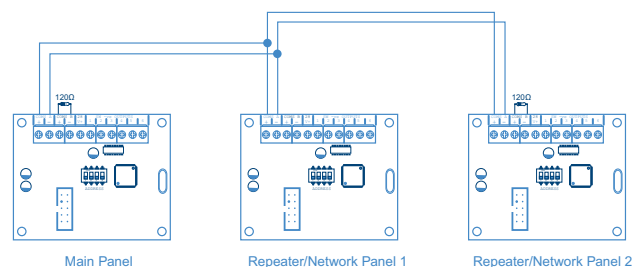


With this switch in the ON position the panel will automatically recognise & operate the Comms PCB (TPCA05).

Fault Tolerant Loop Wiring



Radial/Legacy Wiring



CE
EN 54-5-7
IS 2189
ERTL / NABL